

# 上海国际高级音响展

# premium audio shanghai

www.premiumaudioshanghai.com

www.premiumaudioshanghai.com.cn

日期：2024年9月13至15日 (周五六日)

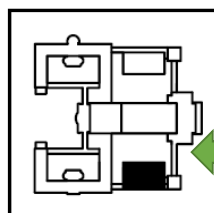
Date: (布展期 2024年9月11至12日)

场地：上海展览中心

Venue: Shanghai Exhibition Centre

<http://www.shzlx.com.cn/>

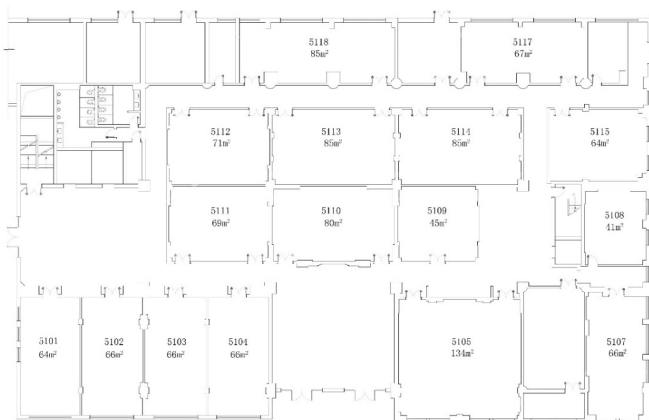
参展费 Participation fee



东二馆  
East hall 2

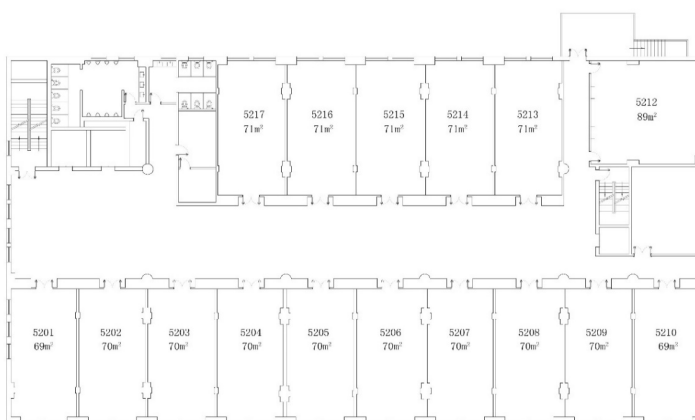
## 东二馆一层 East Hall 2, level 1

| 展厅 Room no. | 面积 sqm | 人民币 RMB |
|-------------|--------|---------|
| 5101        | 64     | 68,000  |
| 5102        | 66     | 68,000  |
| 5103        | 66     | 68,000  |
| 5104        | 66     | 68,000  |
| 5105        | 134    | 110,000 |
| 5107        | 66     | 68,000  |
| 5108        | 41     | 45,000  |
| 5109        | 45     | 55,000  |
| 5110        | 80     | 89,000  |
| 5111        | 69     | 70,000  |
| 5112        | 71     | 70,000  |
| 5113        | 85     | 90,000  |
| 5114        | 85     | 90,000  |
| 5115        | 64     | 60,000  |



## 东二馆二层 East Hall 2, level 2

| 展厅 Room no. | 面积 sqm | 人民币 RMB |
|-------------|--------|---------|
| 5201        | 69     | 75,000  |
| 5202        | 70     | 75,000  |
| 5203        | 70     | 75,000  |
| 5204        | 70     | 75,000  |
| 5205        | 70     | 75,000  |
| 5206        | 70     | 75,000  |
| 5207        | 70     | 75,000  |
| 5208        | 70     | 75,000  |
| 5209        | 70     | 75,000  |
| 5210        | 69     | 75,000  |
| 5212        | 89     | 79,000  |
| 5213        | 71     | 75,000  |
| 5214        | 71     | 75,000  |
| 5215        | 71     | 75,000  |
| 5216        | 71     | 75,000  |
| 5217        | 71     | 75,000  |



# 上海国际高级音响展

# premium audio shanghai

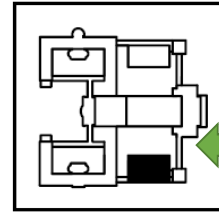
www.premiumaudioshanghai.com

www.premiumaudioshanghai.com.cn

日期： 2024年9月13至15日 (周五六日)  
Date: (布展期 2024年9月11至12日)

场地： 上海展览中心  
Venue: Shanghai Exhibition Centre  
http://www.shzlzx.com.cn/

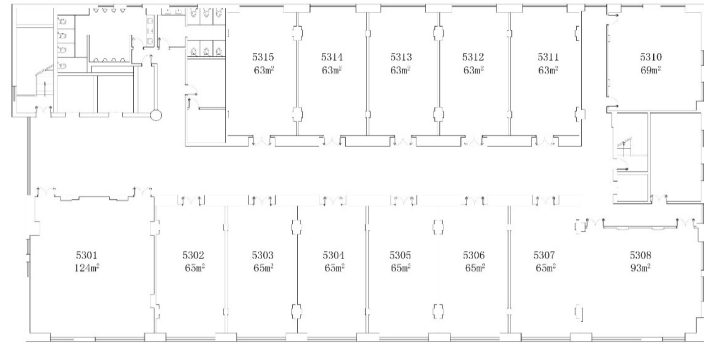
参展费 Participation fee



东二馆  
East hall 2

## 东二馆三层 East Hall 2, level 3

| 展厅 Room no. | 面积 sqm | 人民币 RMB |
|-------------|--------|---------|
| 5301        | 124    | 110,000 |
| 5302        | 65     | 68,000  |
| 5303        | 65     | 68,000  |
| 5304        | 65     | 68,000  |
| 5305        | 65     | 68,000  |
| 5306        | 65     | 68,000  |
| 5307        | 65     | 68,000  |
| 5308        | 93     | 98,000  |
| 5310        | 69     | 68,000  |
| 5311        | 63     | 68,000  |
| 5312        | 63     | 68,000  |
| 5313        | 63     | 68,000  |
| 5314        | 63     | 68,000  |
| 5315        | 63     | 68,000  |



## 东二馆夹层 East hall 2, Mezzanine

| 展厅 Room no. | 面积 sqm | 人民币 RMB |
|-------------|--------|---------|
| 5121        | 10     | 9,800   |
| 5122        | 10     | 9,800   |
| 5123        | 10     | 9,800   |
| 5124        | 10     | 9,800   |
| 5125        | 10     | 9,800   |
| 5126        | 10     | 9,800   |
| 5127        | 10     | 9,800   |
| 5128        | 10     | 9,800   |
| 5129        | 10     | 9,800   |
| 5130        | 10     | 9,800   |
| 5131        | 10     | 9,800   |
| 5132        | 10     | 9,800   |
| 5133        | 10     | 9,800   |
| 5134        | 10     | 9,800   |
| 5135        | 10     | 9,800   |
| 5136        | 10     | 9,800   |
| 5137        | 10     | 9,800   |
| 5138        | 10     | 9,800   |
| 5139        | 10     | 9,800   |
| 5140        | 10     | 9,800   |
| 5141        | 10     | 9,800   |

|              |              |              |              |     |              |              |              |              |              |              |              |
|--------------|--------------|--------------|--------------|-----|--------------|--------------|--------------|--------------|--------------|--------------|--------------|
| 5122<br>10m² | 5123<br>10m² | 5124<br>10m² | 5125<br>10m² | 楼梯间 | 5126<br>10m² | 5127<br>10m² | 5128<br>10m² | 5129<br>10m² | 5130<br>10m² | 5131<br>10m² | 5132<br>10m² |
|--------------|--------------|--------------|--------------|-----|--------------|--------------|--------------|--------------|--------------|--------------|--------------|

|              |
|--------------|
| 5133<br>10m² |
| 5134<br>10m² |
| 5135<br>10m² |
| 5136<br>10m² |
| 5137<br>10m² |
| 5138<br>10m² |
| 5139<br>10m² |
| 5140<br>10m² |
| 5141<br>10m² |